



DGH2116

8CH PoE Solution
EaZy Networking
Push Status
Alarm Scenario Setup

16CH H.265 NVR w/ 8CH POE

Features

H.265 Compression Technology

With this compression technology, the recording capacity is greatly enhanced as well as bandwidth saving for better efficiency and performance than the systems employing other compression formats

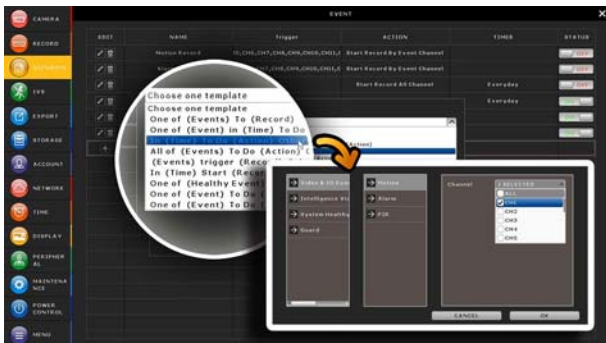


Cloud Service - EaZy Networking*

- EaZy Networking, the cloud service provided by AVTECH, available to connect this device to Internet automatically in three steps with our free mobile app, EagleEyes.
- The "Buddy" feature to share the device access permission to other people.
- Device login / out notifications reported.

Alarm Scenario Customization

"Scenario" is a new feature allowing you to customize a series of actions which will be run automatically after the specified event occurs. There are several scenario templates for you to choose when and what to do after a specific event occurs.



Push Status - Active Event Notification with EagleEyes App

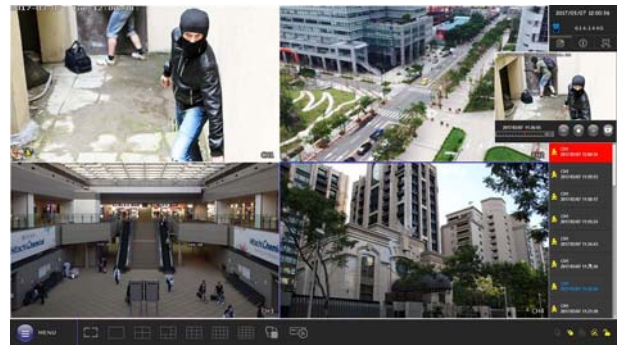
Push Status to send instant notifications for system events, such as video loss or HDD data removal.

One Ethernet Cable Solution (POE, Power-over-Ethernet)

Camera power supply & video transmission over one Ethernet cable to eliminate the needs of power adapters for your cameras during the whole HD surveillance system setup.

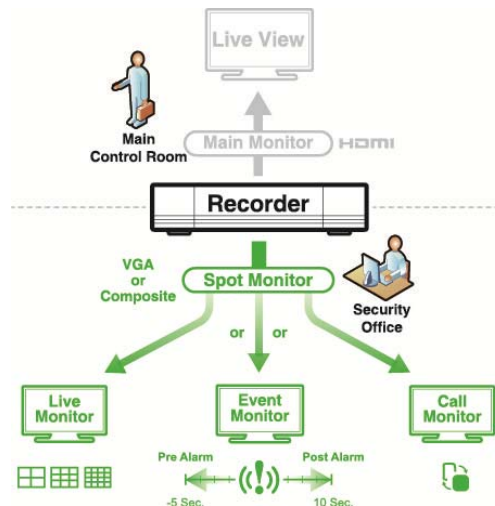
Event Pop-up / Preview

All events are listed on the right panel with corresponding event icons for you to quickly recognize the event type. The most current one will flash to catch your attention. Click one event and you're able to preview the footage with pre-alarm images.



Spot Monitor

In addition to the main display via the main HDMI output, you can assign a secondary display to show live view, call monitor or event monitor.





Specifications*

| Hardware | | |
|-------------------------------|---------------------|---|
| Video Input | | 8 LAN ports with PoE + 1 LAN port |
| Video Output | HDMI | YES (4K2K) |
| | VGA | YES (Spot Monitor Supported) |
| | Composite | YES (Spot Monitor Supported) |
| Video Output Resolution | | 16CH Mode: 1080P 9CH Mode: 4K2K |
| Audio | | 1 in (mic in) / 1 out |
| Alarm I/O | | 4 in / 1 out |
| RS485 | | YES |
| HDD Storage** | | Either two 14TB SATA HDD installed in the recorder, or one 14TB SATA HDD installed and a disk array connected to the recorder via the eSATA interface |
| USB Port | | YES |
| eSATA Port | | Expandable with a SATA to eSATA cable |
| Ethernet | POE port | 10/100 Mbps with PoE x 8 (IEEE802.3af) |
| | LAN port | 10/100 Mbps x 1 |
| | Internet (WAN) port | 1000 Mbps x 1 |
| Software | | |
| Video Compression Format | | H.265 |
| Audio Compression Format | | G711 |
| Local / Remote Display Mode | | 16CH |
| Local / Remote Playback Mode | | 16CH |
| Local Single Channel Playback | | YES |
| Recording Mode | | Manual / Event / Alarm / Schedule |
| Record Streaming | | Dual |
| Recording Resolution | | 240 IPS @ 3264 x 2448 |
| Recording Throughput | | 80Mbps |
| Pre-alarm Recording | | YES |
| Quick Search | | Time / Event |
| Event Notification | | Push Status / Video Mail / Message Mail |
| Security | | Multiple user access levels with password |
| Multicast | | YES |
| Seamless Recording*** | | YES |
| EaZy Networking | | YES |
| Spot Monitor Setup | | Call Monitor / Event Monitor / Live Monitor (VGA & Composite) |
| Alarm Scenario Setup | | YES |
| Alarm Pop-up & Preview | | YES |
| Free DDNS Service | | YES |

Specifications*

| Network | |
|----------------------------------|---|
| Protocols | DDNS, PPPoE, DHCP, NTP, SNTP, TCP/IP, ICMP, SMTP, FTP, HTTP, RTP, RTSP, RTCP, IPv4, Bonjour, UPnP, DNS, UDP, IGMP, QoS, SNMP |
| ONVIF Compatible | YES |
| Max. Online User | 20 |
| Remote Access | (1) Web browser: Windows Edge, Internet Explorer, Google Chrome & Safari (2) PC program: CMS Lite, 32CH CMS software for Windows OS (3) Mobile app: EagleEyes on iOS & Android mobile devices |
| General | |
| Power Source (±10%) | DC48V / 2.5A |
| PoE | IEEE802.3af |
| Operating Temperature | 10°C ~ 40°C (50°F ~ 104°F) |
| Operating Humidity | 10% ~ 85% |
| Dimensions (mm)**** | 319.5 x 254.9 x 52 |
| Net Weight (kg) | 2 |
| Minimum PC Browsing Requirements | <ul style="list-style-type: none"> • Intel core i3 or higher, or equivalent AMD • 2GB RAM • AGP graphics card, Direct Draw, 32MB RAM • Windows 10, Windows 8, Windows 7 & Windows Vista, DirectX 9.0 or later • Windows Edge, Internet Explorer 7.x or later |
| Optional Peripherals | HDMI Matrix (HDM02) / USB Joystick (AVX102) / SATA to eSATA cable (PWSC07F120200) |
| Certification | CE / UL |

*The specifications are subject to change without notice

** HDDs are optional.

*** Available only when the connected cameras are supported

**** Dimensional tolerance: ±0.5mm

Rear Panel

